



## SHENZHEN RUIDISI LIGHTING CO.,LTD

Add: Building 3, Ri'hai Hi-Tech Park, Tongle Dakeng Road,  
Longgang District, Shenzhen, China  
Tel:+86(755)28909523

Email:sales@rdsled.com  
www.rdsled.com



# PRODUCTS

Constant Reseach & Design Make LED Shine

2023

## Contents



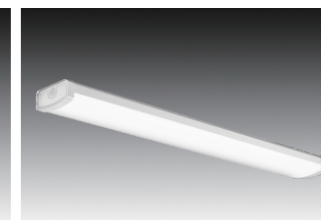
TCS



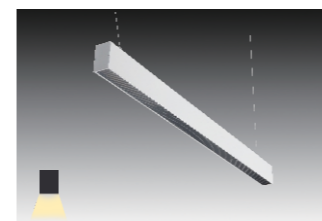
EC



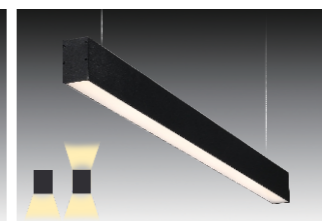
WS



WR



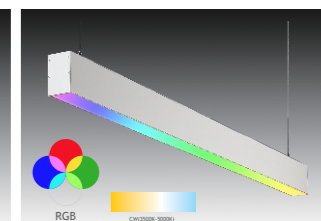
LL3-A/B



LL3-C



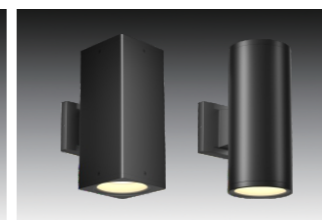
LL3-D



LL3-E



CYS/CYR



CYS/CYR-W



CYS/CYR-RGB



HB

# SELECTABLE LED STRIP



Selectable CCT & Watts



Easy Open Push Button



Linkable



Built-in sensor

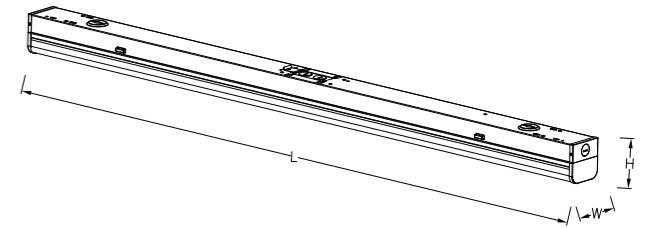
## Features

- Up to 130lm/w, CRI>80Ra
- 4-Power & 3-CCT switchable
- Multi-Voltage: 100-277V/347V, 0-10V Dim
- Emergency backup and sensor optional
- Easy installation, suspending mounting & surface mounted
- DLC 5. 1 Premium Listed



## Dimensions

Power	L	W	H
30w/35w/40w/45w	48"	2.6"	2.79"
60w/70w/80w/90w	96"	2.6"	2.79"
35w	48"	2.6"	2.79"
64w	96"	2.6"	2.79"
90w	96"	2.6"	2.79"



## TCS Series Specification

Model	Power	Luminous	Efficacy	Dimensions	CCT	Input Voltage	Dimming	Optional
RDS-TCS45-4FT-CCT	30w/35w/40w/45w	3900-5850 lm	130 lm/w	48*2.6*2.79"	3000K-4000K-5000K	AC120-277V,120-347V	0-10v	
RDS-TCS90-8FT-CCT	60w/70w/80w/90w	7800-11700 lm	130 lm/w	96*2.6*2.79"	3000K-4000K-5000K	AC120-277V,120-347V	0-10v	Sensor
RDS-TCS35-4FT	35w	4550 lm	130 lm/w	48*2.6*2.79"	4000K/5000K	AC120-277V,120-347V	0-10v	Emergency
RDS-TCS64-8FT	64w	8320 lm	130 lm/w	96*2.6*2.79"	4000K/5000K	AC120-277V,120-347V	0-10v	
RDS-TCS90-8FT	90w	11700 lm	130 lm/w	96*2.6*2.79"	4000K/5000K	AC120-277V,120-347V	0-10v	

# ECO LED STRIP



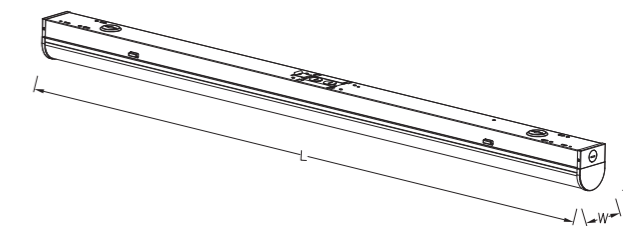
## Features

Up to 130lm/w, CRI>80  
 3-Power & 3-CCT switchable  
 Multi-Voltage: 100-277V/347V, 0-10V Dim  
 Emergency backup and sensor optional  
 Easy installation, suspending mounting  
 & surface mounted  
 DLC 5. 1 Premium Listed



## Dimensions

Power	L	W	H
11W/14W/17W/20W	24"	2.99"	3.15"
25W/30W/35W/40W	48"	2.99"	3.15"
50W/60W/70W/80W	96"	2.99"	3.15"



## EC Series Specification

Model	Power	Luminous	Efficary	Dimensions	CCT	Input Voltage	Dimming	Optional
ECS20-2FTXXX-3CCT	11W/14W/17W/20W	1430-2600 lm	130 lm/w	24*2.99*3.15"	3-CCT Switchable	AC120-277V,120-347V	0-10v	
ECS40-4FTXXX-3CCT	25W/30W/35W/40W	3250-5200 lm	130 lm/w	48*2.99*3.15"	3-CCT Switchable	AC120-277V,120-347V	0-10v	Sensor Emergency
ECS80-8FTXXX-3CCT	50W/60W/70W/80W	6500-10400 lm	130 lm/w	96*2.99*3.15"	3-CCT Switchable	AC120-277V,120-347V	0-10v	

# HIGH POWER WIDE STRIP

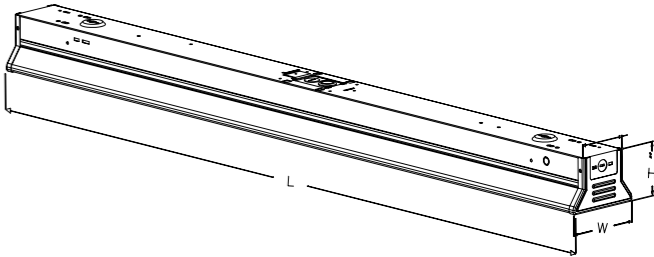
## Features

Up to 135lm/w, CRI>80Ra  
 4ft & 8ft, Mix 90w, Max 150w  
 3-Power & 3-CCT switchable  
 Multi-Voltage: 100-277V/347V, 0-10V Dim  
 Emergency backup and sensor optional  
 Easy installation, suspending mounting  
 & surface mounted  
 DLC 5.1 Premium Listed



## Dimensions

Power	L	W	H
64w/76w/90w	48"	4.7"	3.5"
110w/130w/150w	96"	4.7"	3.5"



## WS Series Specification

Model	Power	Luminous	Efficacy	Dimensions	CCT	Input Voltage	Dimming	Optional
WS90-4FTXXX-XXK	64w/76w/90w	8600-12000lm	135 lm/w	48*4.7*3.5"	4000K/5000K	AC120-277V,120-347V	0-10v	Sensor
WS150-8FTXXX-XXK	110w/130w/150w	14800-20000lm	135 lm/w	96*4.7*3.5"	4000K/5000K	AC120-277V,120-347V	0-10v	Emergency

# DIRECT LED LINEAR

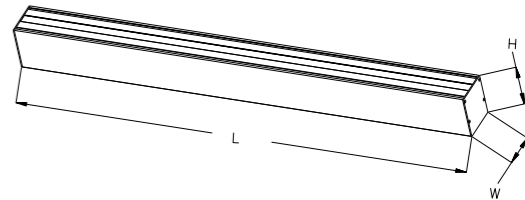
## Features

Up to 130lm/w, CRI>80Ra  
 3-Power & 3-CCT switchable  
 Multi-Voltage: 100-277V/347V, 0-10V Dim  
 Emergency backup and sensor optional  
 Easy installation, suspending mounting  
 surface mounted, Wall, Recessed mounting  
 DLC 5.1 Premium Listed



## Dimensions

Length	L	W	H
2FT	24"	2.1"	3.35"
4FT	48"	2.1"	3.35"
8FT	96"	2.1"	3.35"



## LL3-A/B Series Specification

Model	Power	Luminous	Efficacy	Dimensions	CCT	Input Voltage	Dimming	Optional
LL3-40W-4FTAXXK	40W	5200lm	130 lm/w	48"*2.1"*3.35"	3000K4000K5000K	120-277V/120-347V	0-10v	
LL3-80W-8FTAXXK	80W	10400lm	130 lm/w	96"*2.1"*3.35"	3000K4000K5000K	120-277V/120-347V	0-10v	Sensor Emergency
LL3-20S-2FTB3CCT	15W/17.5W/20W	1950-2600lm	130 lm/w	24"*2.1"*3.35"	3-CCT Switchable	120-277V/120-347V	0-10v	
LL3-40S-4FTB3CCT	30W/35W/40W	3900-5200lm	130 lm/w	48"*2.1"*3.35"	3-CCT Switchable	120-277V/120-347V	0-10v	
LL3-80S-8FTB3CCT	60W/70W/80W	7800-10400lm	130 lm/w	96"*2.1"*3.35"	3-CCT Switchable	120-277V/120-347V	0-10v	





# DIRECT & INDIRECT

## LED LINEAR

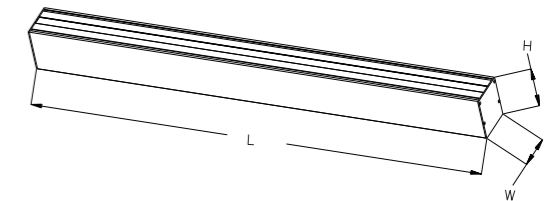


### Features

Up to 130lm/w, CRI>80Ra  
 3-Power & 3-CCT switchable  
 Switch adjustment: Direct & indirect or Direct  
 Multi-Voltage: 100-277V/347V, 0-10V Dim  
 Emergency backup and sensor optional  
 Easy installation, suspending mounting  
 surface mounted, Wall, Recessed mounting  
 DLC 5.1 Premium Listed

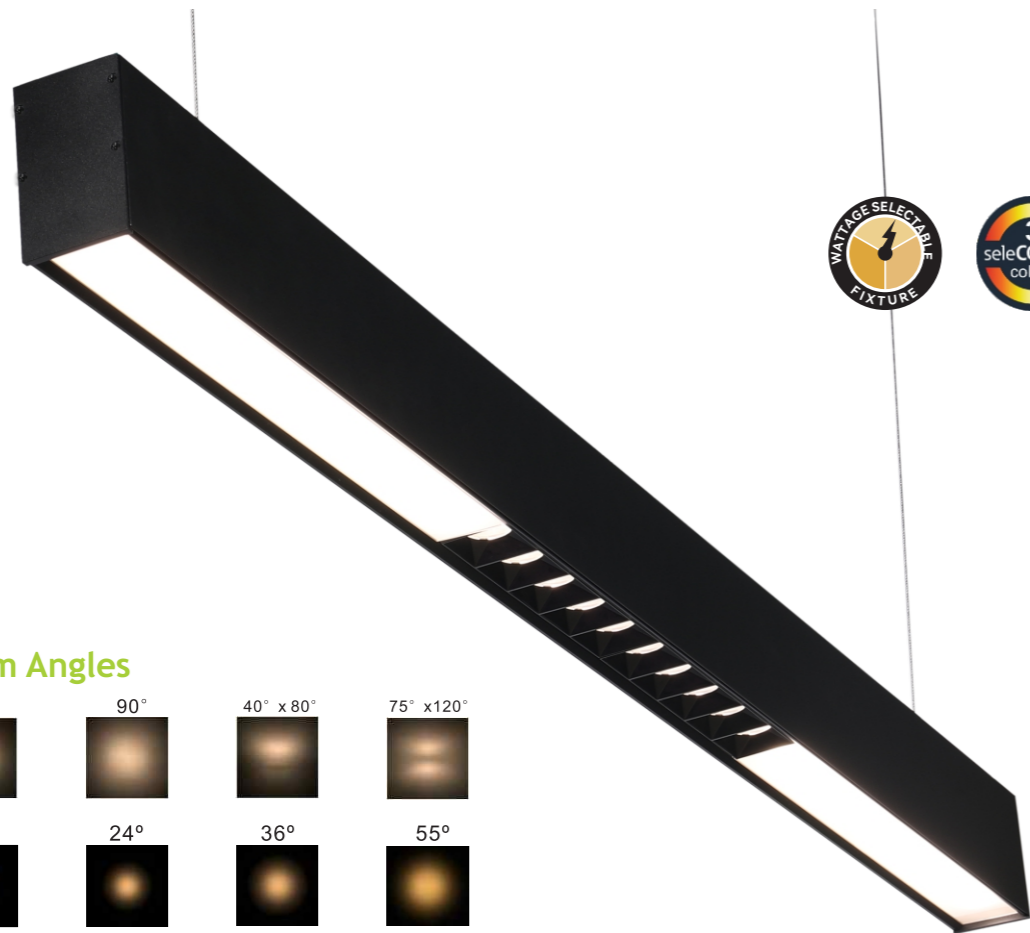
### Dimensions

Length	L	W	H
2FT	24"	2.1"	3.35"
4FT	48"	2.1"	3.35"
8FT	96"	2.1"	3.35"

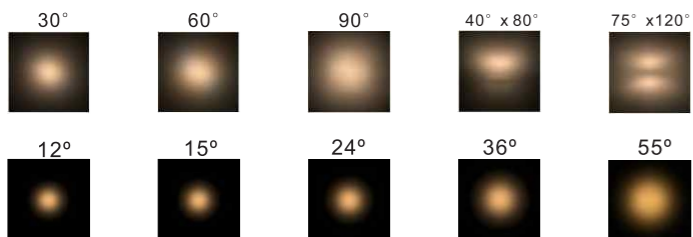


### LL3-C Series Specification

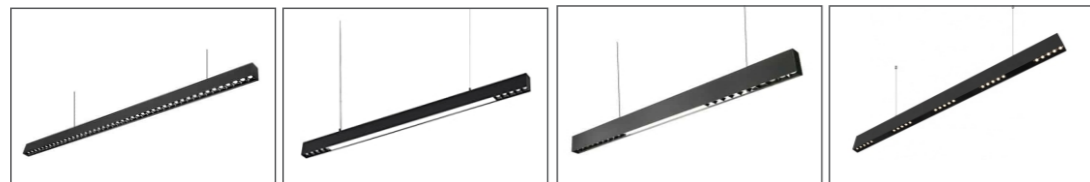
Model	Power	Luminous	Efficary	Dimensions	CCT	Input Voltage	Dimming	Optional
LL3-25S-2FTC3CCT	20W/22.5W/25W	2600-3250lm	130 lm/w	24"*2.1"*3.35"	3-CCT Switchable	120-277V/120-347V	0-10v	
LL3-50S-4FTC3CCT	40W/45W/50W	5200-6500lm	130 lm/w	48"*2.1"*3.35"	3-CCT Switchable	120-277V/120-347V	0-10v	Sensor Emergency
LL3-100S-8FTC3CCT	80W/90W/100W	10400-13000lm	130 lm/w	96"*2.1"*3.35"	3-CCT Switchable	120-277V/120-347V	0-10v	



### Multiple Beam Angles



### Multiple Types

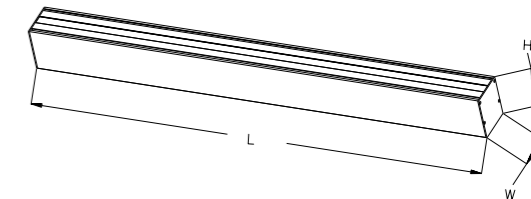


### Features

Up to 130lm/w, CRI>80Ra  
 3-Power & 3-CCT switchable  
 Switch adjustment: Direct & indirect or Direct  
 Multi-Voltage: 100-277V/347V, 0-10V Dim  
 Emergency backup and sensor optional  
 Easy installation, suspending mounting  
 surface mounted, Wall, Recessed mounting  
 DLC 5.1 Premium Listed

### Dimensions

Length	L	W	H
4FT	45"	2.1"	3.35"



### LENS LED LINEAR



### LL3-D Series Specification

Model	Power	Luminous	Efficary	Dimensions	CCT	Input Voltage	Dimming	Optional
LL3-50S-4FTD3CCT	40W/45W/50W	5200-6500lm	130 lm/w	45"×2.1"×3.35"	3-CCT Switchable	120-277V/120-347V	0-10V	Emergency Sensor



# RGBCW LED LINEAR

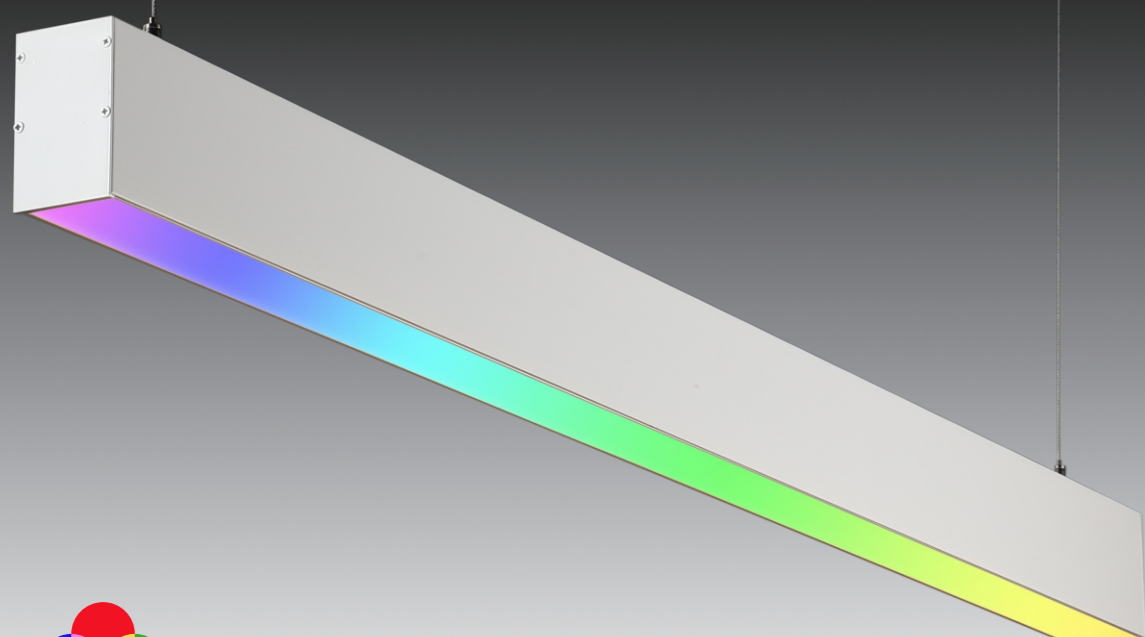
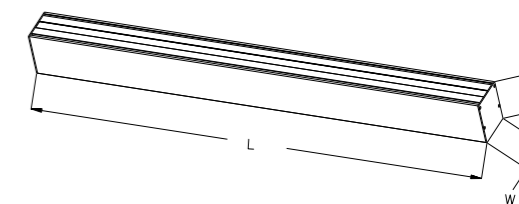
## Features

Up to 120lm/w, CRI>80Ra  
Tuya, Wifi, Zigbee, Bluetooth, RF, infrared.  
Input Voltage: 120V, non-dimmable  
Emergency backup optional  
Easy installation, suspending mounting  
surface mounted, Wall, Recessed mounting  
5 years warranty



## Dimensions

Length	L	W	H
4FT	48"	2.1"	3.35"



RGB



CW(3500K-5000K)



Bluetooth



wifi



## LL3-E Series Specification

Model	Power	Luminous	Efficiency	Dimensions	CCT	Input Voltage	Dimming	Smart
LL3-35W-4FT/RGBCW	RGB 20W CW 35W	4100lm	115lm/w	48*2.1*3.35"	RGBCW	AC120V	No	Tuya/Wifi/Zigbee/Bluetooth



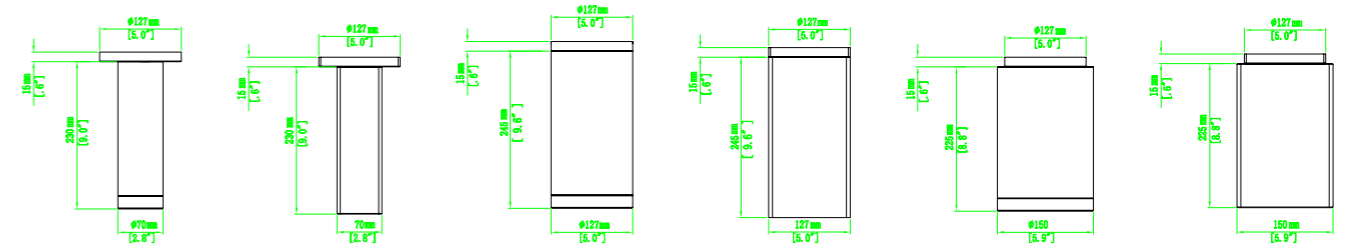
# CYLINDER LED



## Features

- Up to 90lm/w, CRI90
- 4-Power & 5-CCT switchable
- Multi-Voltage: AC100-277V/120-347V
- 0-10V Dimmable, 0-10v and Triac dimmable
- Emergency backup optional
- Easy installation, suspending mounting  
surface mounted, Wall mounted
- 5 Years warranty

## Dimensions



## CYS/CYR Series Specification

Model	Power	Luminous	Efficacy	Dimensions	5-CCT	Input Voltage	Dimming	Style
CYR-15WSCP-5CCT-3	6W/9W/12W/15W	540-1350lm	90 lm/w	Ø2.75" * H9"	5-CCT Switchable	120-277V/120-347V	0-10v	Round
CYR-30WSCP-5CCT-5	15W/20W/25W/30W	1350-2700lm	90 lm/w	Ø5" * H9.6"	5-CCT Switchable	120-277V/120-347V	0-10v	Round
CYR-40WSCP-5CCT-6	25W/30W/35W/40W	2250-3600lm	90 lm/w	Ø6" * H8.8"	5-CCT Switchable	120-277V/120-347V	0-10v	Round
CYS-15WSCP-5CCT-3	6W/9W/12W/15W	540-1350lm	90 lm/w	2.75"*2.75" *H9"	5-CCT Switchable	120-277V/120-347V	0-10v	Square
CYS-30WSCP-5CCT-5	15W/20W/25W/30W	1350-2700lm	90 lm/w	5"*5" * H9.6"	5-CCT Switchable	120-277V/120-347V	0-10v	Square
CYS-40WSCP-5CCT-6	25W/30W/35W/40W	2250-3600lm	90 lm/w	6"*6" * H8.8"	5-CCT Switchable	120-277V/120-347V	0-10v	Square

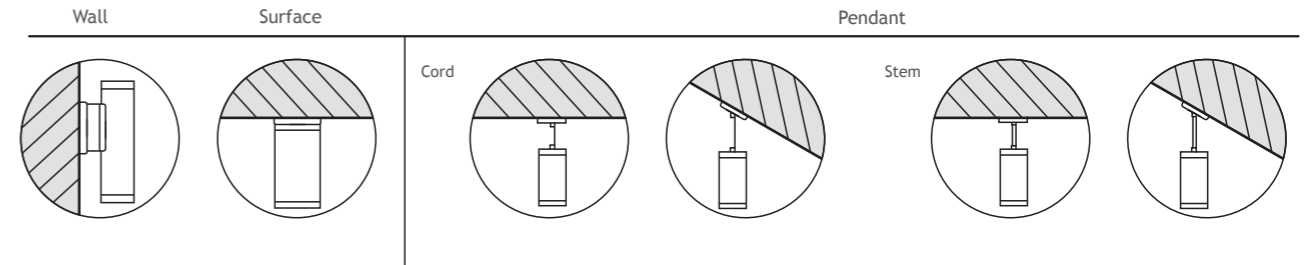
# HIGH LUMENS CYLINDER LED



## Features

- Up to 135lm/w ,CRI90
- 4-Power switchable
- Multi-Voltage: 100-277V/347V
- 0-10V Dimmable
- Emergency backup optional
- Easy installation, suspending mounting  
surface mounted, Wall mounted
- 5 Years warranty

## Installation

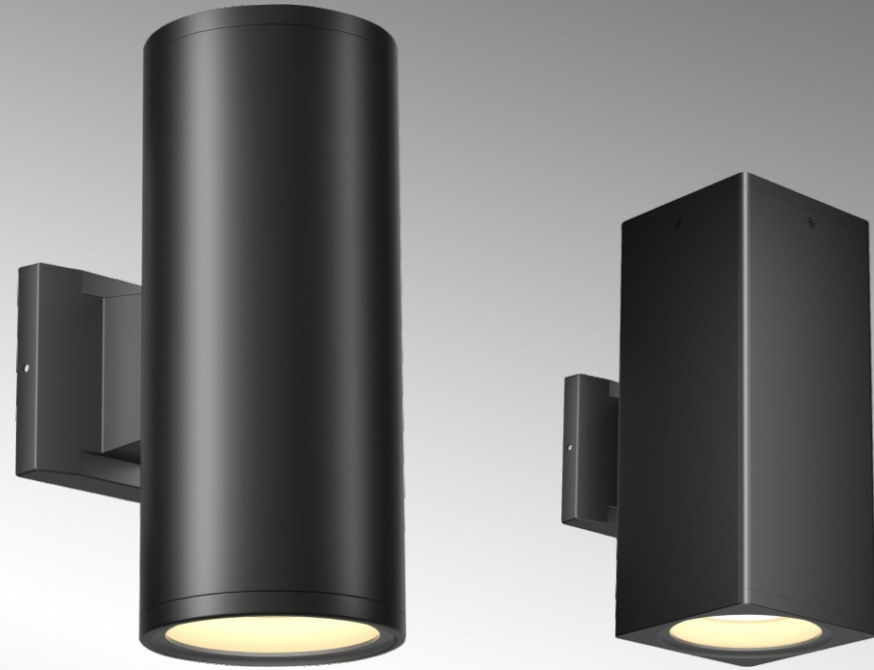


## CYR Series Specification

Model	Power	Luminous	Efficacy	Dimensions	CCT	Input Voltage	Dimming	Style
CYR-60WSP-XXK-7	45W/50W/55W/60W	6100-8000lm	135lm/w	7.14"H11"	3000K/3500K/4000K	120-277V/120-347V	0-10V	Round

**MAX**  
8000LM

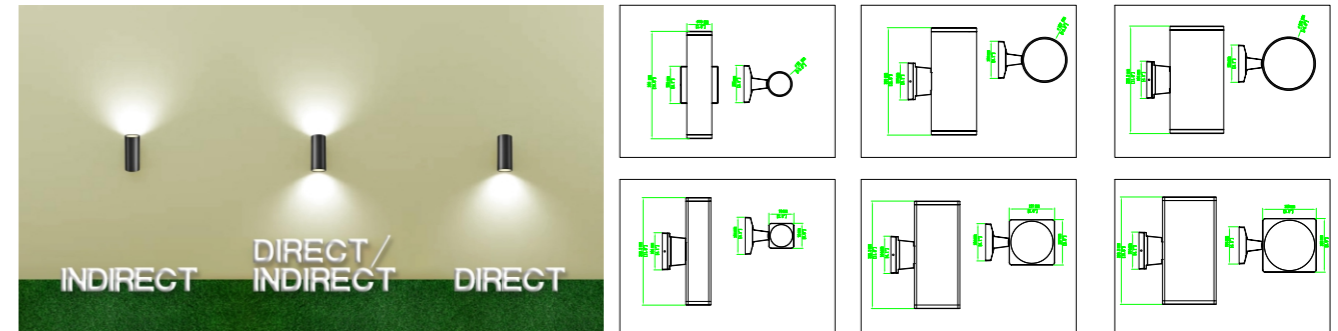




# WALL MOUNT CYLINDER LED

## Features

- Up to 100lm/w, CRI80
- 4-Power & 3-CCT switchable
- Indirect /Direct and Indirect/ Direct
- Multi-Voltage: 100-277V/347V
- Non-dimmable
- Emergency backup & Photocell optional
- Easy installation : Wall mounted
- 5 Years warranty



## CYS/CYR-W Series Specification

Model	Power	Luminous	Efficacy	Dimensions	CCT	Input Voltage	Style	Optional
CYR-20WSCP-3CCT-3	10W/14W/17W/20W	1000-2000lm	100 lm/w	Ø2.75" * H11.8"	3-CCT Switchable	120-277V/120-347V	Round	
CYR-30WSCP-3CCT-5	15W/20W/25W/30W	1500-3000lm	100 lm/w	Ø5" * H11.8"	3-CCT Switchable	120-277V/120-347V	Round	
CYR-40WSCP-3CCT-6	25W/30W/35W/40W	2500-4000lm	100 lm/w	Ø6" * H11.8"	3-CCT Switchable	120-277V/120-347V	Round	Emergency
CYS-20WSCP-3CCT-3	10W/14W/17W/20W	1000-2000lm	100 lm/w	2.75" * 2.75" * H11.8"	3-CCT Switchable	120-277V/120-347V	Square	Photocell
CYS-30WSCP-3CCT-5	15W/20W/25W/30W	1500-3000lm	100 lm/w	5" * 5" * H11.8"	3-CCT Switchable	120-277V/120-347V	Square	
CYS-40WSCP-3CCT-6	25W/30W/35W/40W	2500-4000lm	100 lm/w	6" * 6" * H11.8"	3-CCT Switchable	120-277V/120-347V	Square	

# RGBCW CYLINDER



### Features

- Up to 100lm/w, CRI80
- Tuya, Wifi, Zigbee, Bluetooth, RF, infrared.
- Input Voltage: 120V
- Non-dimmable
- Emergency backup optional
- Easy installation : Wall mounted
- 5 Years warranty



CW(3500K-5000K)



### CYS/CYR-W Series Specification

Model	Power	Luminous	Efficary	Dimensions	CCT	Input Voltage	Style	Smart
CYN-30W-RGBW-5	30W	3000lm	100 lm/w	5*11.8"	RGBCW	AC120V	Round/Square	Tuya/Wifi/Bluetooth/RF
CYN-30W-RGBW-6	30W	3000lm	100 lm/w	6*11.8"	RGBCW	AC120V	Round/Square	Tuya/Wifi/Bluetooth/RF

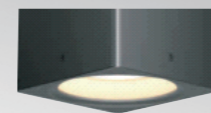
# WALL MOUNT CYLINDER LED

## Features

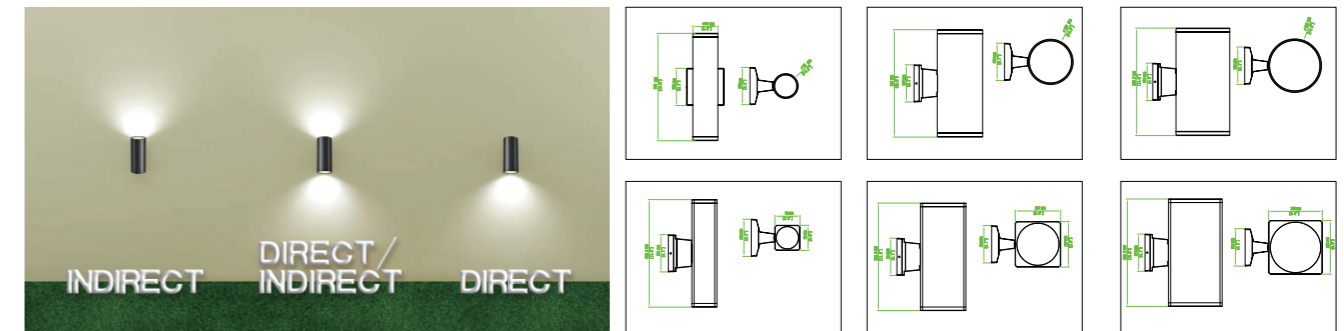
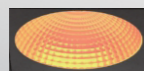
Up to 100lm/w, CRI80  
 4-Power & 3-CCT switchable  
 Indirect /Direct and Indirect/ Direct  
 Multi-Voltage: 100-277V/347V  
 Non-dimmable  
 Emergency backup & Photocell optional  
 Easy installation : Wall mounted  
 5 Years warranty



Round



Square



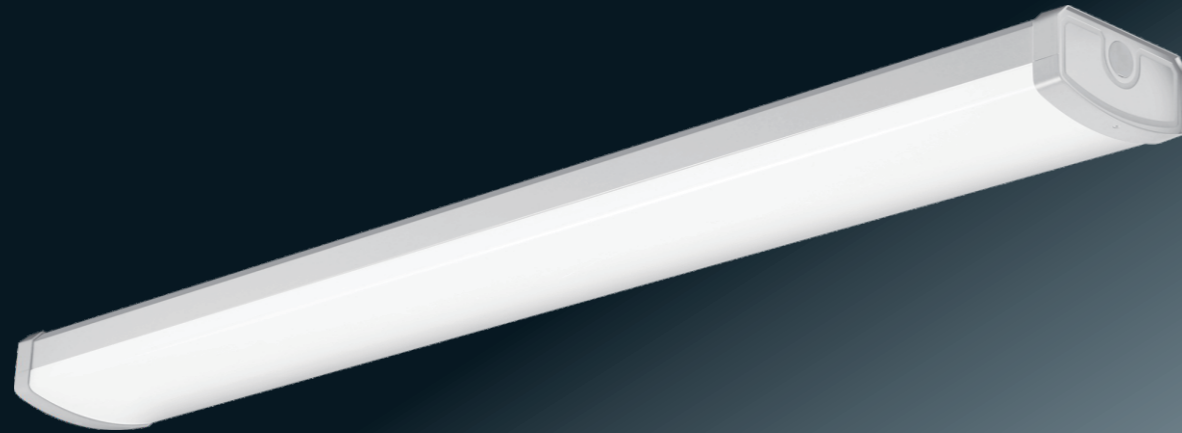
## CYS/CYR-W Series Specification

Model	Power	Luminous	Efficacy	Dimensions	CCT	Input Voltage	Style	Optional
CYN-36WSP-BB-5	18W/24W/30W/36W	1300-2600 lm	72lm/w	5*11.8"	R/O/Y/G/C/B/P/T	AC120V	Round/Square	Emergency
CYN-36WSP-BB-6	18W/24W/30W/36W	1300-2600 lm	72lm/w	6*11.8"	R/O/Y/G/C/B/P/T	AC120V	Round/Square	Photocell

# WRAP LED FIXTURE

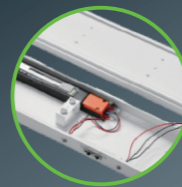
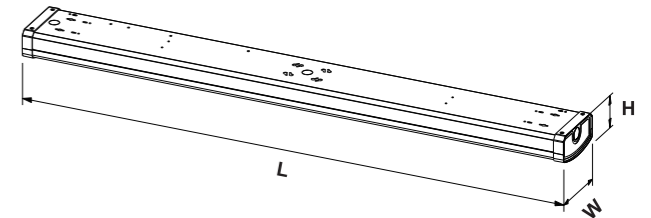
## Features

Up to 130LM/W  
 4ft & 8ft, Min 20w,Max 90w  
 AC120-277V,120-347V or 200-240V  
 Installation:V-Hook Chain & Surface Mounted  
 0-10v dimming,Flicker free  
 Smart,Sensor,Emergency Optional  
 5 years warranty



## Dimensions

Power	L	W	H
20w	24"	5.51"	2.77"
32w	48"	5.51"	2.77"
40w	48"	5.51"	2.77"
48w	48"	5.51"	2.77"



Two-layer design



Large PCB



Selectable CCT & Watts



## WR Series Specification

Model	Power	Luminous	Efficacy	Dimensions	CCT	Input Voltage	Dimming	Optional
RDS-WR20-2FT	20w	2600 lm	130 lm/w	24*5.51*2.77"	4000K/5000K	AC120-277V,120V	0-10v, Triac	
RDS-WR32-4FT	32w	4160 lm	130 lm/w	48*5.51*2.77"	4000K/5000K	AC120-277V,120V	0-10v, Triac	Sensor,
RDS-WR40-4FT	40w	5200 lm	130 lm/w	48*5.51*2.77"	4000K/5000K	AC120-277V,120V	0-10v, Triac	Emergency
RDS-WR2440-4FT	24w-32w-40w	2600-5200 lm	130 lm/w	48*5.51*2.77"	3000K-4000K-5000K	AC120-277V,120V	0-10v, Triac	
RDS-WR48-4FT	48w	6240 lm	130 lm/w	48*5.51*2.77"	4000K/5000K	AC120-277V,120V	0-10v, Triac	

# LINEAR HIGH BAY

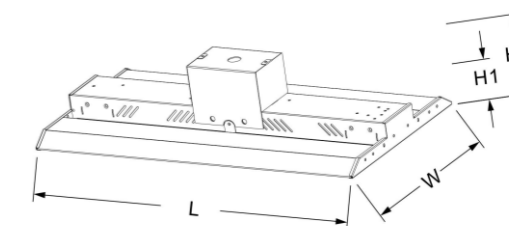
## Features

Luminous efficacy : 160lm/w or 190lm/w  
 Input Voltage:120-277v,120-347v and 277-480v  
 Isolated driver: 0-10V dimming; Flicker free  
 PF >0.95; Driver efficiency 87%; THD<20%  
 Installation: Surface mount,Chain and Pole Mount  
 Apply to dry location  
 CCT:4000K 5000K  
 5 years warranty



## Dimensions

Power	L	W	H2
110w	23.8"	12.6"	1.89"
135w	23.8"	12.6"	1.89"
165w	23.8"	12.6"	1.89"
165w	45.9"	12.6"	1.89"
220w	45.9"	12.6"	1.89"



## Hb5 Series Specification

Model	Power	Luminous	Efficary	Dimensions	CCT	UGR	Dimming Type	Optional
RDS-HB5-110W-2FT	110 watts	14850 lm	135 lm/w	23.8*12.6*1.89"	4000K/5000K	UGR<17	0-10v	
RDS-HB5-135W-2FT	135 watts	18225 lm	135 lm/w	23.8*12.6*1.89"	4000K/5000K	UGR<17	0-10v	AC120-277V AC120-347V
RDS-HB5-165W-2FT	165 watts	22275 lm	135 lm/w	23.8*12.6*1.89"	4000K/5000K	UGR<17	0-10v	AC277-480V
RDS-HB5-165W-4FT	165 watts	22275 lm	135 lm/w	45.9*12.6*1.89"	4000K/5000K	UGR<17	0-10v	Sensor
RDS-HB5-220W-4FT	220 watts	29700 lm	135 lm/w	45.9*12.6*1.89"	4000K/5000K	UGR<17	0-10v	Emergency





# Linear High Bay Light

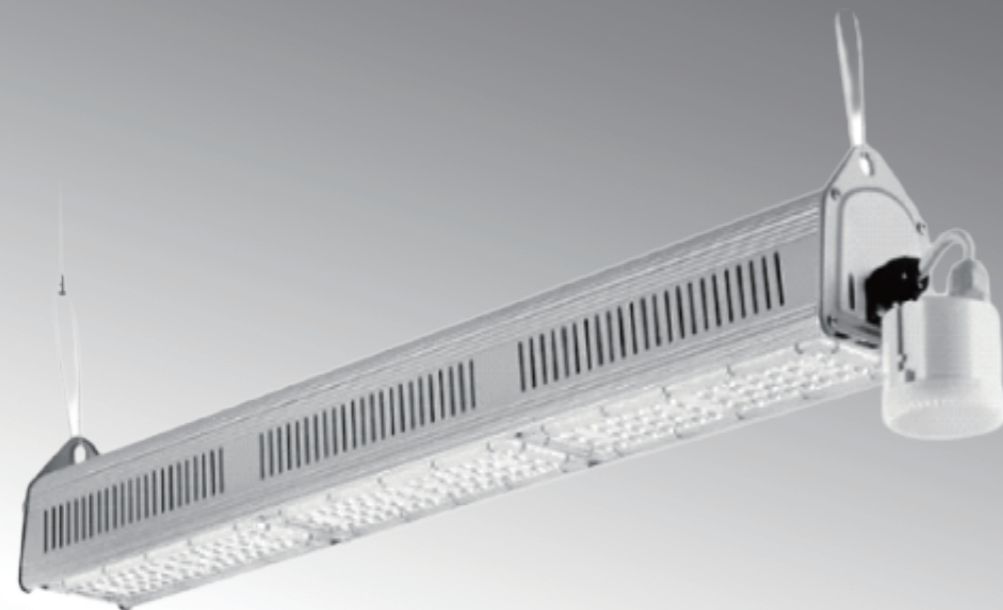
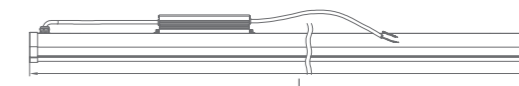
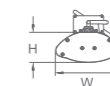


## Features

- Luminous efficacy: 140lm/w or 160lm/w
- Thick 6063 aluminum, good heat dissipation
- Superior isolated driver; Flicker free
- PF>0.95; Driver efficiency 87%; THD<20%
- Installation: Chain & Surface Mounted
- CCT: 4000K 5000K 6500K
- SAA CE ROHS certification
- 5 years warranty

## Dimensions

Power	L(mm)	W(mm)	H(mm)
100W	620	115	144
150W	887	115	144
200W	1154	115	144
240W	1154	115	144



Sensor

## HB-1 Series Specification

Model	Power	Luminous	Efficacy	Dimensions	CCT	Input Voltage	Beam angle	Optional
RDS-HB-G-100W	100W	14000lm & 16000lm	140lm & 160lm	620*115*144mm	4000K/5000K	AC90-305V		
RDS-HB-G-150W	150W	21000lm & 24000lm	140lm & 160lm	887*115*144mm	4000K/5000K	AC90-305V	90°/100*40°	Emergency Sensor
RDS-HB-G-200W	200W	28000lm & 32000lm	140lm & 160lm	1154*115*144mm	4000K/5000K	AC90-305V	/90x60°/140*70°	Sensor
RDS-HB-G-240W	240W	33600lm & 38400lm	140lm & 160lm	1154*115*144mm	4000K/5000K	AC90-305V		

# Linear High Bay Light

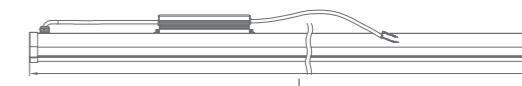
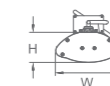


## Features

- Luminous efficacy: 160lm/w or 190lm/w
- Thick 6063 aluminum, good heat dissipation
- Superior isolated driver; Flicker free
- PF>0.95; Driver efficiency 87%; THD<20%
- Installation: Chain & Surface Mounted
- CCT: 4000K 5000K 6500K
- SAA CE ROHS certification
- 5 years warranty

## Dimensions

Power	L(mm)	W(mm)	H(mm)
100W	600	133	56
150W	900	133	56
200W	1200	133	56
240W	1500	133	56



## HB-1 Series Specification

Model	Power	Luminous	Efficacy	Dimensions	CCT	Input Voltage	Dimming	Optional
RDS-HB-I-100W	100W	16000lm & 19000lm	160lm & 190lm	600*133*56mm	4000K/5000K	AC90-305V	0-10v	
RDS-HB-I-150W	150W	24000lm & 28500lm	160lm & 190lm	900*133*56mm	4000K/5000K	AC90-305V	0-10v	Emergency Sensor
RDS-HB-I-200W	200W	32000lm & 38000lm	160lm & 190lm	1200*133*56mm	4000K/5000K	AC90-305V	0-10v	
RDS-HB-I-240W	240W	38400lm & 45000lm	160lm & 190lm	1500*133*56mm	4000K/5000K	AC90-305V	0-10v	

